

HIGHLIGHTS OF PRESCRIBING INFORMATION

These highlights do not include all the information needed to use SITAVIG safely and effectively. See full prescribing information for SITAVIG.

SITAVIG (acyclovir) buccal tablets
Initial U.S. Approval: 1982

INDICATIONS AND USAGE

SITAVIG is a deoxynucleoside analogue of DNA polymerase inhibitor, indicated for the treatment of recurrent herpes labialis (cold sores) in immunocompetent adults. (1).

DOSAGE AND ADMINISTRATION

- Application of one SITAVIG 50 mg buccal tablet as a single dose to the upper gum (canine fossa) region (2.1).
- SITAVIG should be applied within one hour after the onset of prodromal symptoms and before the appearance of any signs of herpes labialis.
- Do not crush, chew, suck or swallow tablets (2.2).

DOSAGE FORMS AND STRENGTHS

50 mg buccal tablets (3)

CONTRAINDICATIONS

Known hypersensitivity to acyclovir, milk protein concentrate, or any other component of the product (4).

ADVERSE REACTIONS

Most common adverse reactions ($\geq 1\%$) are: headache and application site pain (6.1).

To report SUSPECTED ADVERSE REACTIONS, contact EPI Health, LLC, at 1-800-499-4468 or FDA at 1-800-FDA-1088 or www.fda.gov/medwatch.

DRUG INTERACTIONS

Due to the low dose and minimal systemic absorption of SITAVIG, drug interactions are unlikely (7)

See 17 for PATIENT COUNSELING INFORMATION and FDA-Approved Patient Labeling

Revised: 12/2019

FULL PRESCRIBING INFORMATION: CONTENTS*

- 1 INDICATIONS AND USAGE**
- 2 DOSAGE AND ADMINISTRATION**
 - 2.1 Basic Dosing Information
 - 2.2 Administration Instructions
- 3 DOSAGE FORMS AND STRENGTHS**
- 4 CONTRAINDICATIONS**
- 6 ADVERSE REACTIONS**
 - 6.1 Clinical Trial Experience
- 7 DRUG INTERACTIONS**
- 8 USE IN SPECIFIC POPULATIONS**
 - 8.1 Pregnancy
 - 8.2 Lactation
 - 8.4 Pediatric Use
 - 8.5 Geriatric Use
 - 8.6 Immunocompromised Patients
- 10 OVERDOSAGE**
- 11 DESCRIPTION**
- 12 CLINICAL PHARMACOLOGY**
 - 12.1 Mechanism of Action
 - 12.3 Pharmacokinetics
 - 12.4 Microbiology
- 13 NONCLINICAL TOXICOLOGY**
 - 13.1 Carcinogenesis, Mutagenesis, Impairment of Fertility
- 14 CLINICAL STUDIES**
- 16 HOW SUPPLIED/STORAGE AND HANDLING**
- 17 PATIENT COUNSELING INFORMATION**
 - 17.1 Instructions for Use
 - 17.2 Adverse Reactions

*Sections or subsections omitted from the full prescribing information are not listed.

FULL PRESCRIBING INFORMATION

1 INDICATIONS AND USAGE

SITAVIG is indicated for the treatment of recurrent herpes labialis (cold sores) in immunocompetent adults.

2 DOSAGE AND ADMINISTRATION

2.1 Basic Dosing Information

One SITAVIG 50 mg buccal tablet should be applied as a single dose to the upper gum region (canine fossa).

2.2 Administration Instructions

SITAVIG should be applied within one hour after the onset of prodromal symptoms and before the appearance of any signs of herpes labialis lesions. The tablet should be applied with a dry finger immediately after taking it out of the blister. The tablet should be placed to the upper gum just above the incisor tooth (canine fossa) and held in place with a slight pressure over the upper lip for 30 seconds to ensure adhesion. For comfort the rounded side should be placed to the upper gum, but either side of the tablet can be applied.

Tablet should be applied on the same side of the mouth as the herpes labialis symptoms.

Once applied, SITAVIG stays in position and gradually dissolves during the day [*see Clinical Pharmacology (12.3)*]. In addition,

- SITAVIG should not be crushed, chewed, sucked or swallowed.
- Food and drink can be taken normally when SITAVIG is in place. Avoid any situations which may interfere with adhesion of the tablet such as chewing gum, touching or pressing the tablet after placement, wearing upper denture, and brushing teeth. If the teeth need to be cleaned while the tablet is in place, rinse the mouth gently. Drink plenty of liquids in the case of dry mouth.
- If SITAVIG does not adhere or falls off within the first 6 hours, the same tablet should be repositioned immediately. If the tablet cannot be repositioned, a new tablet should be placed.
- If SITAVIG is swallowed within the first 6 hours, the patient should drink a glass of water and a new tablet should be applied. [*see Patient Counseling Information (17)*].
- SITAVIG does not need to be reapplied if the tablet falls out or is swallowed after the first 6 hours

3 DOSAGE FORMS AND STRENGTHS

SITAVIG is a buccal tablet containing 50 mg of acyclovir. SITAVIG tablets are round, off-white tablets, with a rounded side and a flat side. The tablets are marked with an “AL21” on the flat side.

4 CONTRAINDICATIONS

SITAVIG is contraindicated in patients with known hypersensitivity (e.g., anaphylaxis) to acyclovir, milk protein concentrate, or any other component of the product.

6 ADVERSE REACTIONS

6.1 Clinical Trial Experience

Because clinical trials are conducted under widely varying conditions, adverse reaction rates observed in the clinical trials of a drug cannot be directly compared to rates in the clinical trials of another drug and may not reflect the rates observed in clinical practice.

The overall safety of SITAVIG was assessed in 378 adult subjects having at least 4 herpes labialis episodes the previous year.

One randomized, double-blind, placebo-controlled trial was conducted in patients with recurrent herpes labialis (cold sores). In this trial, 378 HSV infected subjects used SITAVIG as a single dose, and 397 subjects used placebo.

Selected treatment emergent adverse events without regard to causality and reported in at least 1% of patients can be seen in Table 1.

Table 1 Selected Treatment Emergent Adverse Events reported in at least 1% of patients

Event	SITAVIG N = 378	Placebo N = 397
Nervous System Disorders		
Headache	3%	3%
Dizziness	1%	1%
Lethargy	1%	0
Gastrointestinal system Disorders		
Gingival Pain	1%	0.3%
Aphthous Stomatitis	1%	0
Administration Site Conditions		
Application Site Pain	1%	1%
Application Site Irritation	1%	0
Skin and Subcutaneous Disorders		
Erythema	1%	0.3%
Rash	1%	0.3%

The treatment emergent adverse events considered related to treatment that occurred in greater than or equal to 1% of patients included headache (1% SITAVIG vs. 2% placebo) and application site pain (1% both arms). There was no discontinuation of SITAVIG due

to adverse drug reactions. Most treatment related adverse events were mild or moderate in severity. One report of headache from both treatment arms was classified as severe.

7 DRUG INTERACTIONS

No interaction studies have been performed with SITAVIG. Acyclovir is primarily eliminated unchanged in the urine via active tubular secretion. Drugs administered concomitantly that compete with tubular secretion may increase acyclovir plasma concentrations. However, due to the low dose and minimal systemic absorption of SITAVIG, systemic drug interactions are unlikely.

8 USE IN SPECIFIC POPULATIONS

8.1 Pregnancy

There are no available data on SITAVIG use in pregnant women. However, published observational studies over decades of use of acyclovir have not identified a drug-associated risk of major birth defects, miscarriage, or adverse maternal or fetal outcomes. Systemic exposure of acyclovir following buccal administration of SITAVIG is minimal [see *Clinical Pharmacology (12.3)*]. Animal reproduction studies have not been conducted with SITAVIG. Animal reproduction studies with systemic exposure of acyclovir have been conducted. Refer to oral and parental acyclovir prescribing information for additional details.

8.2 Lactation

There are no data on the presence of acyclovir in human milk following buccal administration. There are no data on the effects of acyclovir on the breastfed infant or milk production. Systemic exposure following buccal administration of acyclovir is minimal [see *Clinical Pharmacology (12.3)*]. The developmental and health benefits of breastfeeding should be considered along with the mother's clinical need for SITAVIG and any potential adverse effects on the breastfed child from SITAVIG or from the underlying maternal condition.

8.4 Pediatric Use

Safety and effectiveness of SITAVIG in pediatric patients have not been established. The ability of pediatric patients to comply with the application instructions has not been evaluated. Use in younger children is not recommended due to potential risk of choking.

8.5 Geriatric Use

Clinical studies of SITAVIG did not include sufficient numbers of subjects aged 65 and over to determine whether they respond differently from younger subjects.

8.6 Immunocompromised Patients

The safety of SITAVIG has not been studied in immunocompromised subjects.

10 OVERDOSAGE

Acyclovir absorption and systemic exposure following application of SITAVIG are minimal. Overdose is therefore unlikely [*see Clinical Pharmacology (12.3)*].

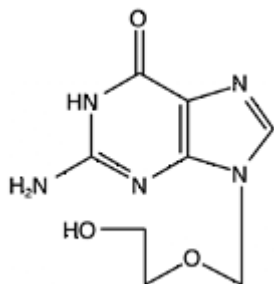
Symptomatic and supportive care is the basis for management.

11 DESCRIPTION

SITAVIG (acyclovir) buccal tablet is applied topically to the gum and releases acyclovir as the buccal tablet gradually dissolves [*see Clinical Pharmacology (12.3)*].

Acyclovir is a synthetic purine nucleoside analogue active against herpes viruses. The chemical name of acyclovir is 2-amino-1,9-dihydro-9-[(2-hydroxyethoxy) methyl]-6H-purin-6-one; it has a molecular formula of $C_8H_{11}N_5O_3$ and a molecular weight of 225. The structural formula is shown in Figure 1.

Figure 1: Structural Formula of Acyclovir



Acyclovir drug substance is a white or almost white crystalline powder.

SITAVIG contains 50 mg of acyclovir, USP and the following inactive ingredients: hypromellose, USP; milk protein concentrate; sodium lauryl sulfate, NF; magnesium stearate, NF; microcrystalline cellulose, NF; povidone, USP; colloidal silicon dioxide, NF.

12 CLINICAL PHARMACOLOGY

12.1 Mechanism of Action

Acyclovir is an antiviral drug active against α -herpesviruses [*see Microbiology (12.4)*].

12.3 Pharmacokinetics

Absorption and Distribution

Salivary

The pharmacokinetic parameters of acyclovir after a single dose of SITAVIG in the saliva and plasma of healthy volunteers are provided in Table 2.

Table 2: Pharmacokinetic (PK) Parameters of Acyclovir in Saliva and Plasma Following Application of a Single SITAVIG 50 mg Tablet in Healthy Volunteers (N = 12)

PK Parameters (N = 12)	Salivary Mean \pm SD (Min - Max)	Plasma ¹ Mean \pm SD (Min - Max)
AUC _{0-24h} (mcg.h/mL)	2900 \pm 2400 (849 - 9450)	0.225 \pm 0.132 (0.027-0.422)
C _{max} (mcg/mL)	440 \pm 241 (149 - 959)	0.028 \pm 0.010 (0.017-0.055)
T _{max} (hour) ²	7.04 (3.07 - 18.05)	12 (5-16)

¹ Acyclovir plasma concentrations had a delayed appearance (undetectable at 5 hours) and were below the concentrations required for antiviral activity (range: 17.5 to 55.3 nanogram per mL).

²Median (Min - Max).

In the Phase 3 study, the levels of acyclovir in saliva were measured within 24 hours of SITAVIG application in 56 patients with recurrent herpes labialis (mean value 88.1 micrograms per mL) and were within the range of those observed in the PK study in healthy volunteers.

In healthy volunteers, the median duration of buccal adhesion was 14 hours following application of a single SITAVIG 50 mg tablet.

Plasma

Plasma concentrations of acyclovir were measured in 12 healthy volunteers after a single-dose application of SITAVIG 50 mg buccal tablet. Acyclovir concentrations had a delayed appearance (undetectable at 5 hours) and were below the concentrations required for antiviral activity (range: 17.5 to 55.3 nanogram per mL).

Metabolism and Excretion

Acyclovir is metabolized to 9-[(carboxymethoxy) methyl] guanine (CMMG) and 8-hydroxy-acyclovir (8-OH-ACV) by oxidation and hydroxylation and is primarily excreted unchanged by the kidneys.

Food Effect

There was no formal food effect study conducted with SITAVIG; however, in clinical studies patients were allowed to eat and drink while taking SITAVIG.

12.4 Microbiology

Mechanism of Action

Acyclovir is a synthetic purine deoxynucleoside analogue with inhibitory activity against herpes simplex viruses type 1 (HSV-1) and type 2 (HSV-2) DNA polymerases. It inhibits HSV-1 and HSV-2 replication in cell culture and *in vivo*.

The inhibitory activity of acyclovir is selective due to its affinity for the enzyme thymidine kinase encoded by HSV. This viral enzyme converts acyclovir into acyclovir monophosphate, a deoxynucleotide analogue. The monophosphate is further converted into diphosphate by cellular guanylate kinase and into triphosphate by a number of

cellular enzymes. In biochemical assays, acyclovir triphosphate inhibits replication of α -herpes viral DNA. This inhibition is accomplished in 3 ways: 1) competitive inhibition of viral DNA polymerase, 2) incorporation into and termination of the growing viral DNA chain, and 3) inactivation of the viral DNA polymerase.

Antiviral activity

The quantitative relationship between the susceptibility of herpes viruses to antivirals in cell culture and the clinical response to therapy has not been established in humans, and virus sensitivity testing has not been standardized. Sensitivity testing results, expressed as the concentration of drug required to inhibit by 50% the growth of virus in cell culture (EC_{50}), vary greatly depending upon a number of factors. Using plaque-reduction assays on Vero cells, the EC_{50} values of acyclovir against herpes virus isolates ranged from 0.09 to 60 μ M (0.02 to 13.5 μ g/mL) for HSV-1 and from 0.04 to 44 μ M (0.01 to 9.9 μ g/mL) for HSV-2.

Resistance

In Cell Culture

Acyclovir-resistant HSV-1 and HSV-2 strains were isolated in cell culture. Acyclovir-resistant HSV resulted from mutations in the viral thymidine kinase (TK; pUL23) and DNA polymerase (POL; pUL30) genes. Frameshifts were commonly isolated and result in premature truncation of the HSV TK product with consequent decreased susceptibility to acyclovir. Mutations in the viral TK gene may lead to complete loss of TK activity (TK negative), reduced levels of TK activity (TK partial), or alteration in the ability of viral TK to phosphorylate the drug without an equivalent loss in the ability to phosphorylate thymidine (TK altered). In cell culture the following resistance-associated substitutions in TK of HSV-1 and HSV-2 were observed (Table 3).

Table 3: Summary of Acyclovir (ACV) Resistance-associated Amino Acid Substitutions in Cell Culture

HSV-1	TK	P5A, H7Q, L50V, G56V, G59A, G61A, K62N, T63A, E83K, P84S, D116N, P131S, R163H, A167V, P173L, Q185R, R216S, R220H, T245M, R281stop, T287M, M322K
HSV-2	TK	L69P, C172R, T288M
HSV-1	POL	D368A, Y557S, E597D, V621S, L702H, N815S, V817M, G841C
HSV-2	POL	-

In HSV-Infected Patients

Clinical HSV-1 and HSV-2 isolates obtained from patients who failed treatment for their α -herpesvirus infections were evaluated for genotypic changes in the TK and POL genes and for phenotypic resistance to acyclovir (Table 4). HSV isolates with frameshift mutations and resistance-associated substitutions in TK and POL were identified. The listing of substitutions in the HSV TK and POL leading to decreased susceptibility to acyclovir is not all inclusive and additional changes will likely be identified in HSV variants isolated from patients who fail acyclovir-containing regimens. The possibility of viral resistance to acyclovir should be considered in patients who fail to respond or experience recurrent viral shedding during therapy.

Table 4: Summary of ACV Resistance-associated Amino Acid Substitutions Observed in Treated Patients

HSV-1	TK	G6C, R32H, R41H, R51W, Y53C/D/H, Y53stop, D55N, G56D/S, P57H, H58N/R/Y, G59R, G61A, K62N, T63I, Q67stop, S74stop, Y80N, E83K, P84L, Y87H, W88R, R89Q/W, E95stop, T103P, Q104H, Q104stop, H105P, D116N, M121L/R, S123R, Q125H, M128L, G129D, I143V, A156V, D162A/H/N, R163G/H, L170P, Y172C, P173L, A174P, A175V, R176Q/W, R176stop, L178R, S181N, V187M, A189V, V192A, G200C/D/S, T201P, V204G, A207P, L208F/H, R216C/H, R220C/H, R221H, R222C/H, L227F, T245M/P, L249P, Q250Stop, C251G, R256W, E257K, Q261R, T287M, L288Stop, L291P/R, L297S, L315S, L327R, C336Y, Q342Stop, T354P, L364P, A365T
HSV-2	TK	R34C, G39E, R51W, Y53N, G59P, G61W, S66P, A72S, D78N, P85S, A94V, N100H, I101S, Q105P, T131P, D137stop, F140L, L158P, S169P, R177W, S182N, M183I, V192M, G201D, R217H, R221C/H, Q222stop, R223H, Y239stop, R271V, P272S, D273R, T287M, C337Y
HSV-1	POL	K532T, Q570R, L583V, A605V, A657T, D672N, V715G, A719T/V, S724N, F733C, E771Q, S775N, L778M, E798K, V813M, N815S, G841S, I890M, G901V, V958L, H1228D
HSV-2	POL	E250Q, D307N, K533E, A606V, C625R, R628C, E678G, A724V, S725G, S729N, I731F, Q732R, M789K/T, V818A, N820S, Y823C, Q829R, T843A, M910T, D912N/V, A915V, F923L, T934A, R964H

Note: Many additional pathways to acyclovir resistance likely exist.

Cross-resistance

Cross-resistance has been observed among HSV isolates carrying frameshift mutations and resistance-associated substitutions, which confer reduced susceptibility to penciclovir (PCV), famciclovir (FCV), and foscarnet (FOS) [Table 5].

Table 5: Summary of Amino Acid Substitutions Conferring Cross-Resistance to PCV, FCV or FOS

Cross-resistant to PCV/FCV	HSV-1 TK	G6C, R32H, R51W, Y53C/H, H58N, G61A, S74Stop, E83K, P84L, T103P, Q104Stop, D116N, M121R, I143V, R163H, L170P, Y172C, A174P, R176Q/W, Q185R, A189V, G200D, L208H, R216C, R220H, R222C/H, T245M, Q250Stop, R256W, R281Stop, T287M, L315S, M322K, C336Y
Cross-resistant to PCV/FCV	HSV-1 POL	A657T, D672N, V715G, A719V, S724N, E798K, N815S, G841S
Cross-resistant to PCV/FCV	HSV-2 TK	G39E, R51W, Y53N, R177W, R221H, T288M
Cross-resistant to PCV/FCV	HSV-2 POL	K533E, A606V, C625R, R628C, S729N, Q732R, M789K/T, V818A, N820S, F923L, T934A
Cross-resistant to FOS	HSV-1 POL	D368A, A605V, D672N, L702H, V715G, A719T/V, S724N, L778M, E798K, V813M, N815S, V817M, G841C/S, I890M
Cross-resistant to FOS	HSV-2 POL	K533E, A606V, C625R, R628C, A724V, S725G, S729N, I731F, Q732R, M789K/T, V818A, Y823C, D912V, F923L, T934A, R964H

13 NONCLINICAL TOXICOLOGY

13.1 Carcinogenesis, Mutagenesis, Impairment of Fertility

Systemic exposure following buccal administration of acyclovir is minimal. Results from previous studies of carcinogenesis, mutagenesis and fertility for acyclovir are not included in the full prescribing information for SITAVIG due to the minimal exposure that results from buccal administration. Information on these studies following systemic exposure is available in the full prescribing information for acyclovir products approved for oral and parenteral administration.

14 CLINICAL STUDIES

Study in Patients with Recurrent Herpes Labialis (cold sores)

The efficacy and safety of SITAVIG was evaluated in a randomized, double-blind, placebo-controlled, patient-initiated, multicenter trial comparing SITAVIG 50 mg administered as a single dose (n = 378) to placebo (n = 397) in patients with recurrent herpes labialis (cold sores). A total of 376 SITAVIG treated patients and 395 placebo treated patients were included in the Intent to Treat (ITT) efficacy population defined as all patients who took study treatment and who had a start date and time of treatment initiation recorded. The mean age was 41.0 years (range: 18-80 years) and the majority of patients were female (68.6%), and Caucasian (94.9%). All patients had at least 4 herpes episodes in the previous year of whom 68.4% had ≥ 5 episodes. Patients were instructed to initiate treatment within one hour after the onset of prodromal symptoms and before the appearance of any signs of herpes labialis lesions by applying the tablet to the buccal mucosa in the canine fossa. If the tablet was detached within the first 6 hours, subjects were instructed to reapply a tablet.

The mean and median durations of the recurrent herpes labialis episode (ITT population, n=771) were approximately half a day shorter in patients treated with SITAVIG compared with patients treated with placebo.

16 HOW SUPPLIED/STORAGE AND HANDLING

SITAVIG buccal tablets are supplied as off-white tablets containing 50 mg of acyclovir. SITAVIG tablets have a rounded side and a flat side and are imprinted with AL21 on one side. SITAVIG tablets are packaged in blisters of two tablets (NDC 71403-049-02).

SITAVIG should be stored at 20 to 25°C (68 to 77°F) [see USP controlled room temperature]; excursions between 15 and 30°C (59-86°F) permitted at room temperature. Protect from moisture and keep out of reach of children.

17 PATIENT COUNSELING INFORMATION

See FDA-approved patient labeling (Patient Information and Instructions for Use).

Instructions for Use

Read the Instructions for Use that comes with SITAVIG before you start using it. Talk to your doctor or pharmacist if you have any questions.

Important:

Inform patients that SITAVIG is not a cure for cold sores.

SITAVIG should be applied to the area of the upper gum above the incisor tooth. SITAVIG tablets should not be crushed, sucked, chewed or swallowed.

If it comes out before 6 hours have gone by, reapply it. If this does not work, then a new tablet should be applied.

It should not be applied to the inside of the lip or cheek.

- Tablet should be applied on the same side of the mouth as the herpes labialis symptoms.
- Do not remove SITAVIG if it sticks to your upper gum. If SITAVIG does not stick or falls off of your upper gum within the first 6 hours that you apply it, place it back onto your upper gum. If it still does not stick, replace it with a new SITAVIG tablet.
- Do not re-apply SITAVIG if it falls out or you swallow it after it has been in place 6 hours or longer.
- If you swallow SITAVIG within the first 6 hours of applying it, drink a glass of water and place a new SITAVIG tablet onto your upper gum.

Adverse Reactions

Patients may experience adverse reactions including headache, and application site pain.

Patient Information
SITAVIG (SIT-a-vig)
(acyclovir) buccal tablets

What is SITAVIG?

- SITAVIG is a prescription medicine used to treat cold sores (herpes labialis) in adults with normal immune systems.
- It is not known if SITAVIG is safe and effective in children.

Who should not use SITAVIG?

Do not use SITAVIG if you are allergic to:

- acyclovir or any of the ingredients in SITAVIG. See the end of this leaflet for a complete list of ingredients in SITAVIG.
- milk protein concentrate

Before using SITAVIG, tell your healthcare provider about all of your medical conditions, including if you:

- are pregnant or plan to become pregnant. It is not known if SITAVIG will harm your unborn baby.
- are breastfeeding or plan to breastfeed. It is not known if SITAVIG passes into your breast milk. Talk to your healthcare provider about the best way to feed your baby during treatment with SITAVIG.
- Tell your healthcare provider about all the medicines you take, including prescription and over-the-counter medicines, vitamins, and herbal supplements.

How should I use SITAVIG?

See the detailed Instructions for Use for information about how to use SITAVIG.

- Use SITAVIG exactly as your healthcare provider tells you to use it.
- Use SITAVIG within 1 hour after you have the first symptom of a cold sore, such as itching, redness, burning, or tingling, and before a cold sore appears.
- You may eat and drink while using SITAVIG.
- Do not crush, chew, suck, or swallow SITAVIG tablets.
- SITAVIG will slowly dissolve over time while in your mouth and should be left in place.
- Gently rinse your mouth with water to clean your teeth while SITAVIG is in place.
- Drink more liquids if your mouth becomes dry while using SITAVIG.

What should I avoid while using SITAVIG?

You should avoid activities that may prevent SITAVIG from sticking to your gum, including: touching or pressing SITAVIG after you apply it, wearing upper dentures, chewing gum, and brushing your teeth during the treatment day.

What are the possible side effects of SITAVIG?

The most common side effects of SITAVIG include: headache and pain where SITAVIG is applied.

These are not all the possible side effects of SITAVIG. Call your doctor for medical advice about side effects. You may report side effects to FDA at 1-800-FDA-1088.

How should I store SITAVIG?

- Store SITAVIG between 68°F to 77°F (20°C to 25°C). Keep SITAVIG tablets dry.

Keep SITAVIG and all medicines out of the reach of children.

General information about the safe and effective use of SITAVIG

Medicines are sometimes prescribed for purposes other than those listed in a Patient Information leaflet. Do not use SITAVIG for a condition for which it was not prescribed. Do not give SITAVIG to other people, even if they have the same symptoms that you have. It may harm them. You can ask your pharmacist or healthcare provider for information about SITAVIG that is written for health professionals.

What are the ingredients in SITAVIG?

Active ingredient: acyclovir

Inactive ingredients: hypromellose, milk protein concentrate, sodium lauryl sulfate, magnesium stearate, microcrystalline cellulose, povidone, colloidal silicon dioxide.

Manufactured By: Farméa, 10 rue Bouché Thomas, ZAC d'orgemont, 49 000 Angers - France

For more information call 1-800-499-4468.

Instructions for Use
SITAVIG (SIT-a-vig)
(acyclovir) buccal tablets

Read the Instructions for Use that comes with SITAVIG before you start using it. Talk to your healthcare provider or pharmacist if you have any questions.

Important:

- SITAVIG should be applied within 1 hour after you have the first symptom of a cold sore, such as itching, redness, burning, or tingling, and before a cold sore appears.
- SITAVIG should be applied on the same side of your mouth as the cold sore symptoms.
- SITAVIG should be applied to your upper gum, just above your incisor tooth.
- SITAVIG should not be applied to the inside of your lip or your cheek.
- If SITAVIG does not stick to your upper gum or falls off of your upper gum within the first 6 hours after you apply it, the same tablet should be placed back onto your upper gum right away. If this SITAVIG tablet does not stay in place, apply another SITAVIG tablet to your upper gum.
- Do not re-apply SITAVIG if it falls out or you swallow it after it has been in place 6 hours or longer.
- If you swallow SITAVIG within the first 6 hours of applying it, drink a glass of water and place a new SITAVIG tablet onto your upper gum.

How to apply SITAVIG:

Step 1: Before you apply SITAVIG, find the area on your upper gum, just above either the left or the right incisor. The incisor tooth is the tooth just to the right or left of your two front teeth (**See Figure A**). This is where you should apply SITAVIG.

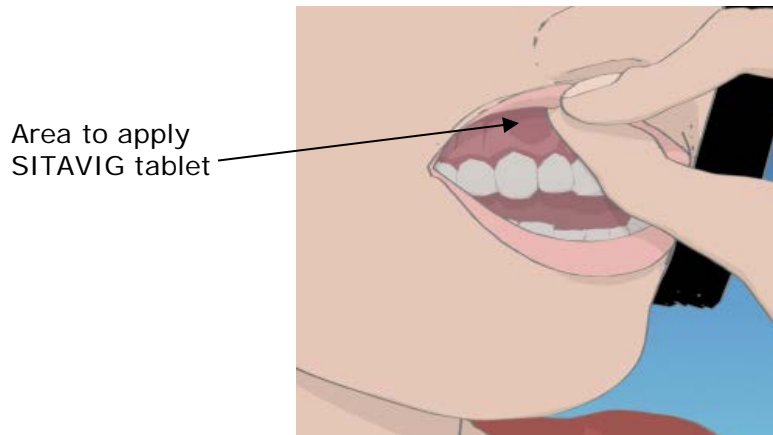


Figure A

Step 2: Peel back the cover of the blister pack. Take 1 SITAVIG out of the blister pack. When removed from the blister pack, SITAVIG must be used right away. SITAVIG is round on one side and flat on the other side (**See Figure B**).

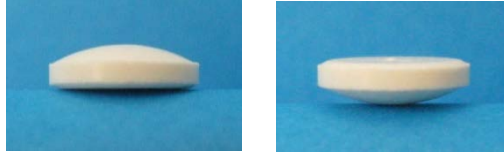


Figure B

Step 3: Place the flat side of SITAVIG on your dry fingertip. Apply the round side of SITAVIG to your upper gum (**See Figure C**). The flat side will be facing the inside of your lip.

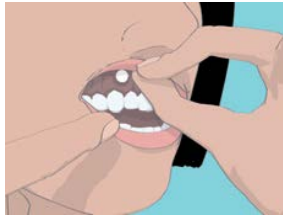


Figure C

Step 4: Hold SITAVIG in place by applying a slight pressure with your finger on the outside of your upper lip, over the area where SITAVIG is placed, for 30 seconds. This will help SITAVIG stick to your gum (**See Figure D**).



Figure D

Step 5: Leave the SITAVIG tablet in place until it dissolves.

This Instructions for Use has been approved by the U.S. Food and Drug Administration.

Manufactured By: Farméa
10 rue Bouché Thomas
ZAC d'orgemont
49 000 Angers - France

US patent numbers:

©2013 <company name>

Issued: April/2013